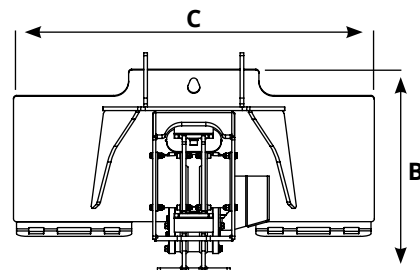
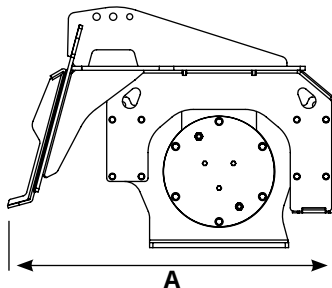
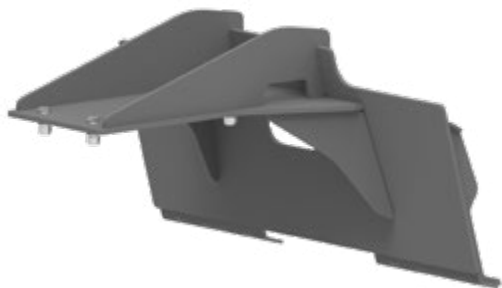


# FRONT-MOUNTED ATTACHMENT

## ATTACHE FRONTALE SIMPLE PLURY

- › Grâce à l'utilisation de l'accessoire frontal Plury, il est possible d'utiliser le propulseur de vibrations sur des machines telles que des chargeuses compactes.



Model	A mm	B mm	C mm	Kg.	Model. PLURY
FRONT-MOUNTED ATTACHMENT PLURY 1.5 - 4.5 ton	796	566	1190	90	W1 15.0
FRONT-MOUNTED ATTACHMENT PLURY 4 - 12 ton	847	673	1190	115	W1 27.0   W1 40.0
FRONT-MOUNTED ATTACHMENT PLURY 8 - 16 ton	1005	805	1190	150	W1 65.0   W1 95.0 W2 60.0   W2 80.0

Model	A mm	B mm	C mm	D mm	Kg.
COUPLING TO LOADER	/	/	/	/	/

