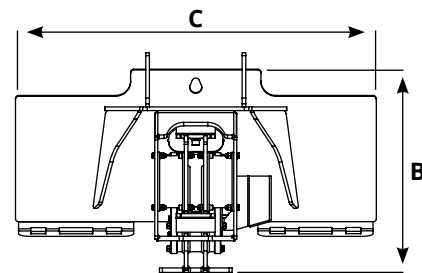
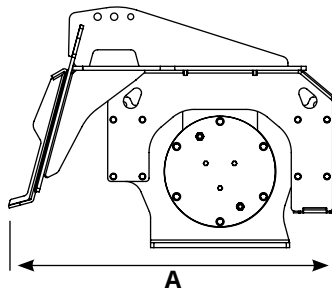
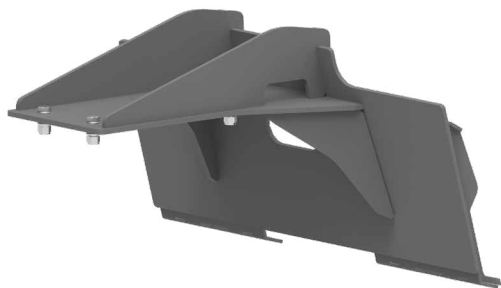


# FRONT-MOUNTED ATTACHMENT

## ATTACCO FRONTALE SINGOLO PER PLURY

- › Attraverso l'utilizzo dell'attacco frontale Plury si ha la possibilità di utilizzare il propulsore su macchine da lavoro come skid loader, mini skid loader, mini pala gommata



Model	A mm	B mm	C mm	Kg.	Model. PLURY
FRONT-MOUNTED ATTACHMENT PLURY 1.5 - 4.5 ton	796	566	1190	90	W1 15.0
FRONT-MOUNTED ATTACHMENT PLURY 4 - 12 ton	847	673	1190	115	W1 27.0   W1 40.0
FRONT-MOUNTED ATTACHMENT PLURY 8 - 16 ton	1005	805	1190	150	W1 65.0   W1 95.0 W2 60.0   W2 80.0

### Model

COUPLING TO LOADER  
supplemento per PALE

