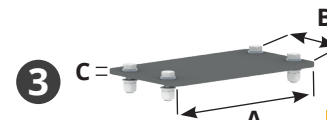
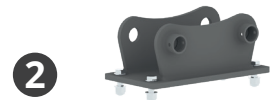


TORNADO 2			Tornado 2 350			Tornado 2 450			Tornado 2 600			Tornado 2 600 PLUS		
TONS			1.5 - 4.0			4.0 - 9.0			9.0 - 13.0			13.0 - 18.0		
A (mm)			830			970			1230			1230		
B (Ømm)			350			450			600			600		
C (mm)			430			540			710			710		
D (mm)			610			610			730			730		
E (mm)			350			350			350			350		
Engine (CC)	Hydraulic Fluid Flow Rate (L/Min)	Rev/min (RPM)	12	16	1330	25	32	1280	45	56	1290	80	110	1375
			18	24	1330	28	36	1280	50	64	1300			
			25	32	1280	32	42	1315	63	80	1300			
			28	36	1280									
			32	42	1315									
Weight (Kg)			116			170			278			278		
Teeth number			16			20			28			28		
Pressure (BAR)			250			250			250			250		
Back press. Max. (BAR)			15			15			15			15		

KIT DRAINAGE

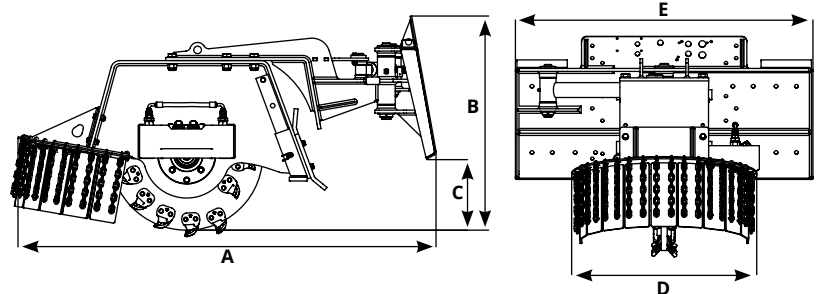
TORNADO DRAINAGE KIT backpressure MAX 15 BAR

	Model	A mm	B mm	C mm	Kg.
1	ADAPTER FOR QUICK COUPLING for 350	/	/	/	/
	ADAPTER FOR QUICK COUPLING for 450	/	/	/	/
	ADAPTER FOR QUICK COUPLING for 600	/	/	/	/
2	FIXED COUPLING MACHINE for 350	/	/	/	/
	FIXED COUPLING MACHINE for 450	/	/	/	/
	FIXED COUPLING MACHINE for 600	/	/	/	/
3	BOLTED PLATE MACHINE COUPLING for 350	350	280	10	13
	BOLTED PLATE MACHINE COUPLING for 450	380	350	12	17
	BOLTED PLATE MACHINE COUPLING for 600	470	280	15	16.5





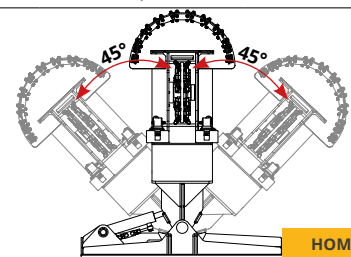
SWINGING FRONT STUMP GRINDER for SKID LOADER and WHEEL LOADER



TORNADO 2F			Tornado 2F 350			Tornado 2F 450			Tornado 2F 600			Tornado 2F 600 PLUS		
A (mm)			1435			1490			1650			1650		
B (Ømm)			595			695			860			860		
C (mm)			20			120			285			285		
D (mm)			610			610			730			730		
E (mm)			1170			1170			1170			1170		
Engine (cc)	Hydraulic Fluid Flow Rate (L/Min)	Rev/min (RPM)	12	16	1330	25	32	1280	45	56	1290	80	110	1375
			18	24	1330	28	36	1280	50	64	1300			
			25	32	1280	32	42	1315	63	80	1300			
			28	36	1280									
			32	42	1315									
Weight (Kg)			231			285			393			393		
Teeth number			16			20			28			28		
Pressure (BAR)			250			250			250			250		
Backpress. Max. (BAR)			15			15			15			15		

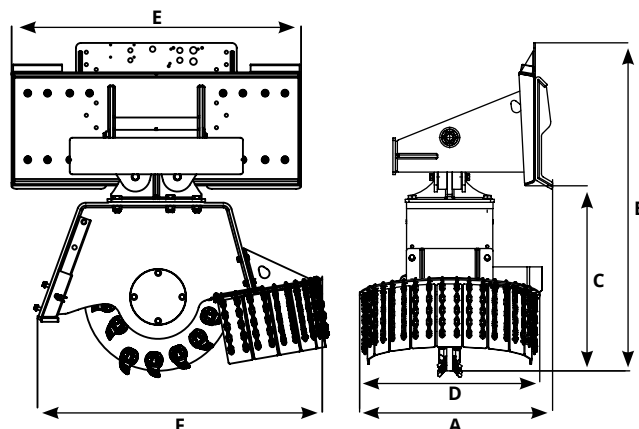
Model KIT	HYDRAULIC KIT	Model Tornado	Engine (cc)	Cod.
KIT A - 2F	HYDRAULIC KIT 4 HOSES + DRAINAGE WITH MOTOR FLOW ADJUSTMENT	350	12cc 18cc	HIIXX01028
KIT B - 2F	HYDRAULIC KIT 4 HOSES + DRAINAGE WITH MOTOR FLOW ADJUSTMENT	350 450	25cc 28cc 32cc	HIIXX01029
KIT C - 2F	HYDRAULIC KIT 4 HOSES + DRAINAGE WITH MOTOR FLOW ADJUSTMENT	600 600 plus	45cc 50cc 63cc 80cc	HIIXX01030
KIT D - 2F	HYDRAULIC KIT 2 HOSES + DRAINAGE WITH MOTOR FLOW ADJUSTMENT + SWING	350	12cc 18cc	HIIO401038
KIT E - 2F	HYDRAULIC KIT 2 HOSES + DRAINAGE WITH MOTOR FLOW ADJUSTMENT + SWING	350 450	25cc 28cc 32cc	HIIO401035
KIT F - 2F	HYDRAULIC KIT 2 HOSES + DRAINAGE WITH MOTOR FLOW ADJUSTMENT + SWING	600 600 plus	45cc 50cc 63cc 80cc	HIIO401037
KIT G - 2F	HYDRAULIC KIT 4 HOSES + DRAINAGE (adjustment is managed by the host machine)	350	12cc 18cc	HIIXX01033
KIT H - 2F	HYDRAULIC KIT 4 HOSES + DRAINAGE (adjustment is managed by the host machine)	350 450	25cc 28cc 32cc	HIIXX01034
KIT I - 2F	HYDRAULIC KIT 4 HOSES + DRAINAGE (adjustment is managed by the host machine)	600 600 plus	45cc 50cc 63cc 80cc	HIIXX01035

Model
COUPLING TO LOADER
Supplement for BLADES





TRANSVERSE FRONT STUMP GRINDER for SKID LOADER and WHEEL LOADER



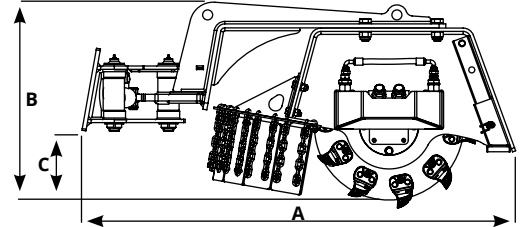
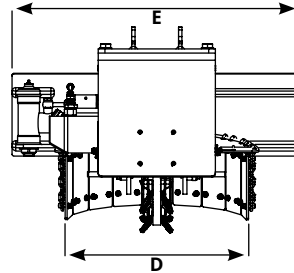
TORNADO 2FT			Tornado 2FT 350			Tornado 2FT 450			Tornado 2FT 600			Tornado 2FT 600 PLUS		
A (mm)			720			720			780			780		
B (Ømm)			1060			1160			1325			1325		
C (mm)			480			570			750			750		
D (mm)			610			610			730			730		
E (mm)			1170			1170			1170			1170		
F (mm)			760			900			1150			1150		
Engine (CC)	Hydraulic Fluid Flow Rate (L/Min)	Rev/min (RPM)	12	16	1330	25	32	1280	45	56	1290	80	110	1375
			18	24	1330	28	36	1280	50	64	1300			
			25	32	1280	32	42	1315	63	80	1300			
			28	36	1280									
			32	42	1315									
Weight (Kg)			246			300			408			408		
Teeth number			16			20			28			28		
Pressure (BAR)			250			250			250			250		
Backpress. Max. (BAR)			15			15			15			15		

Model KIT	HYDRAULIC KIT	Model Tornado	Engine (cc)	Cod.
KIT A - 2FT	HYDRAULIC KIT 4 HOSES + DRAINAGE WITH MOTOR FLOW ADJUSTMENT	350	12cc 18cc	HIIXX01036
KIT B - 2FT	HYDRAULIC KIT 4 HOSES + DRAINAGE WITH MOTOR FLOW ADJUSTMENT	350 450	25cc 28cc 32cc	HIIXX01037
KIT C - 2FT	HYDRAULIC KIT 4 HOSES + DRAINAGE WITH MOTOR FLOW ADJUSTMENT	600 600 plus	45cc 50cc 63cc 80cc	HIIXX01038
KIT D - 2FT	HYDRAULIC KIT 4 HOSES + DRAINAGE (adjustment is managed by the host machine)	350	12cc 18cc	HIIXX01039
KIT E - 2FT	HYDRAULIC KIT 4 HOSES + DRAINAGE (adjustment is managed by the host machine)	350 450	25cc 28cc 32cc	HIIXX01040
KIT F - 2FT	HYDRAULIC KIT 4 HOSES + DRAINAGE (adjustment is managed by the host machine)	600 600 plus	45cc 50cc 63cc 80cc	HIIXX01041

Model
COUPLING TO LOADER Supplement for BLADES



SWINGING FRONT STUMP GRINDER for MINI SKID LOADER



TORNADO 2FM			Tornado 2FM 350			Tornado 2FM 450		
A (mm)			1210			1300		
B (Ømm)			490			590		
C (mm)			100			200		
D (mm)			610			610		
E (mm)			865			865		
Engine (CC)	Hydraulic Fluid Flow Rate (L/Min)	Rev/min (RPM)	12	16	1330	25	32	1280
			18	24	1330	28	36	1280
			25	32	1280	32	42	1315
			28	36	1280			
			32	42	1315			
Weight (Kg)			166			220		
Teeth number			16			20		
Pressure (BAR)			250			250		
Backpress. Max. (BAR)			15			15		

Model KIT	HYDRAULIC KIT	Model Tornado	Engine (cc)	Cod.
KIT A - 2FM	HYDRAULIC KIT 4 HOSES + DRAINAGE WITH MOTOR FLOW ADJUSTMENT	350	12cc 18cc	HIIXX01026
KIT B - 2FM	HYDRAULIC KIT 4 HOSES + DRAINAGE WITH MOTOR FLOW ADJUSTMENT	350 450	25cc 28cc 32cc	HIIXX01027
KIT C - 2FM	HYDRAULIC KIT 2 HOSES + DRAINAGE WITH MOTOR FLOW ADJUSTMENT + SWING	350	12cc 18cc	HI10401036
KIT D - 2FM	HYDRAULIC KIT 2 HOSES + DRAINAGE WITH MOTOR FLOW ADJUSTMENT + SWING	350 450	25cc 28cc 32cc	HI10401039
KIT E - 2FM	HYDRAULIC KIT 4 HOSES + DRAINAGE (adjustment is managed by the host machine)	350	12cc 18cc	HIIXX01031
KIT F - 2FM	HYDRAULIC KIT 4 HOSES + DRAINAGE (adjustment is managed by the host machine)	350 450	25cc 28cc 32cc	HIIXX01032

